

ServoTrack ST484 Driver / Controller

Quick Setup and Motor Run Test

Overview:

SnapTrack Programming Software is based on **SCRATCH**, a conceptual block programming language developed at MIT for young kids and adults to learn and have fun with the basics of programming.

HARDWARE SETUP

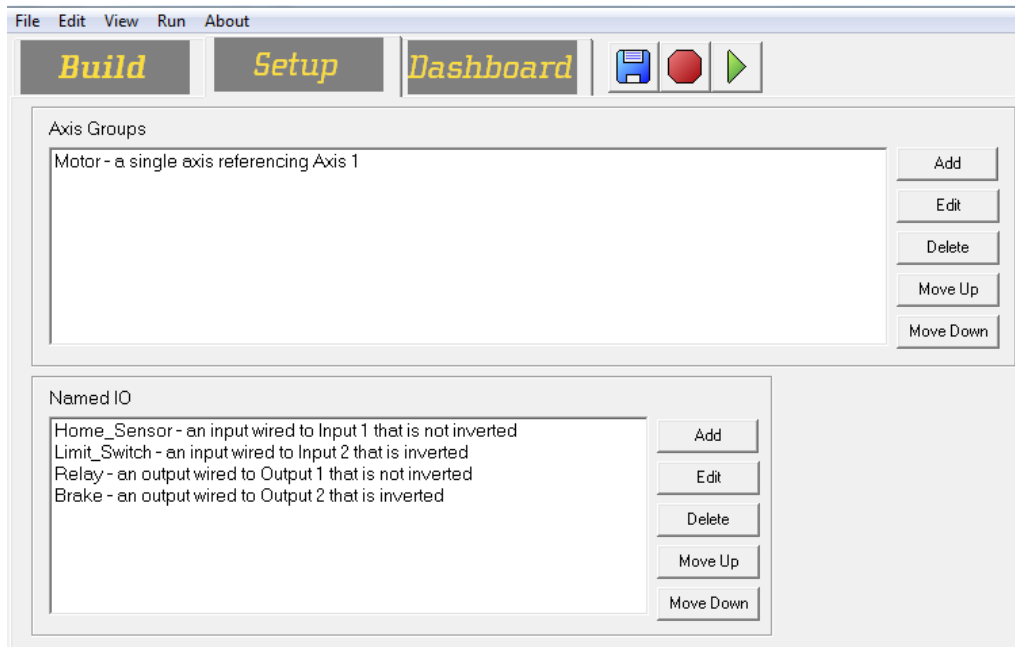
1. Unpack your ServoTrack ST484 Product.
2. Required Equipment / Tools:
 - a. Windows PC Computer (Our software does NOT run on a Mac or Linux)
 - b. 12-48 VDC Power Supply
 - c. Small Flat Screwdriver for terminal connectors
 - d. One USB cable A to USB mini (Included)
 - e. Your rotary or linear actuator motor with installed 1,000 line (4,000 count) encoder. (For Dynamic Closed Loop Control)
 - f. 6-8 Feet of wire for your motor connection. (AWG will depend on your motor size)
3. Connect Motor Phase Wires to appropriate position on ST484.
4. Connect Primary Encoder Wires to appropriate position on ST484. (For Dynamic Closed Loop Control)
5. While Power is OFF, connect Input DC Power to appropriate position on ST484.
6. Turn on AC Power to Power Supply.
The Green LED on the ST484 should blink slowly.
7. Connect USB cable to your PC and ST484.
8. See next section on SnapTrack Programming Software

SNAPTRACK PROGRAMMING

1. Download and Install the SnapTrack Software from our Website:
www.kocomotionus.com

Now you will create a short simple program to run your motor.

2. Open SnapTrack. (Click on yellow icon)
3. The following "Setup" Window will appear.



Note: The Setup Tab is used to set the fundamental parameters of your motor(s). These parameters include naming different motors (for Distributed Control), setting a motor's USER units. Also, all I/O configurations will be configured here. The Setup tab essentially functions as the hardware settings for the SY484 Controller.

4. Double Click on the Motor in the Axis Group to setup your motor parameters.
Note: There are default factory setting already established for ease of your motor run test.
5. Click OK.
6. Now Select the Dashboard Tab.

Note: The Dashboard Tab provides the starting point in creating programs. The graphed area provides a workspace to create the program's interface using tools such as buttons, labels, and more.

We have to create an Object in order for your program to run.

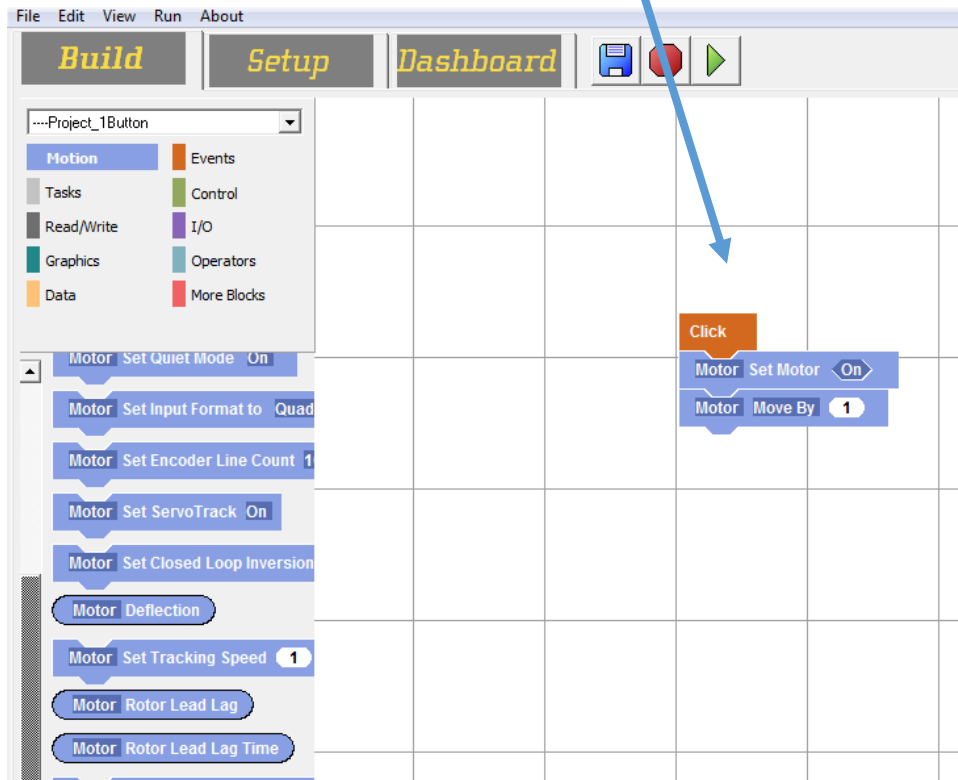
Click on BUTTON on the left side and then click the inside of the Title Box.

A default button will appear.

To edit label of this button double click on button and edit.

7. Now select the BUILD Tab.
8. Then Select Events
Note: A Procedure must start with an Event
9. Select the "Click" block and move it to the build space.
10. Click on "Motion Block Tab"
11. Select "Set Motor On Block" block and move to and nest with "Click" Block.
12. Select "Motor Move By Block" and move to nest with last block.
Note: By clicking on the numerical value you can change the number of motor rotations before stopping.
13. Click on Save program icon at the top right.

Your SIMPLE run program should look like this.



14. Click on the Green Play Button at the top.
This will compile and save the program on your PC.

15. Click on the "Project 1" button and watch your motor turn.

16. That's all you have to do to test run your motor !

17. For more in depth programming capability, please refer to our SnapTrack Programming manual on our website.

18. Did your program run successfully?

IF NOT, let's troubleshoot:

- a. Check all your Hardware connections.
- b. Review the Programming procedures one more time.

WANT HELP??

CONTACT AN APPLICATION ENGINEER AT 408-612-4970 (8:00AM to 5:00PM PACIFIC TIME)

DINGS' MOTION USA™

....Precision Motion Specialists